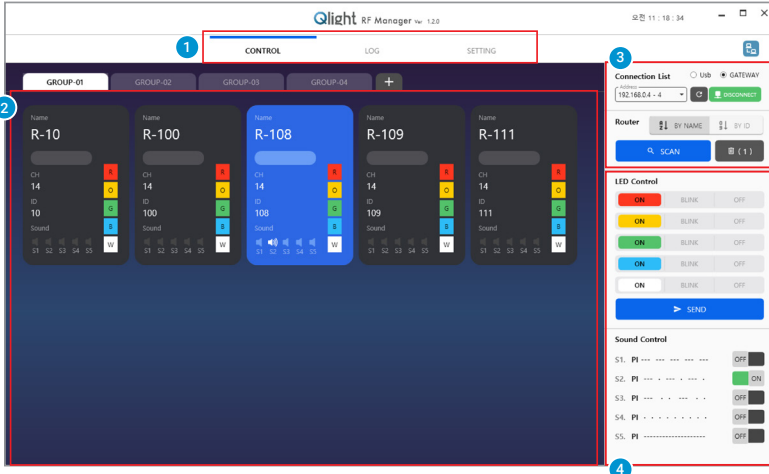


2. Connection Instructions

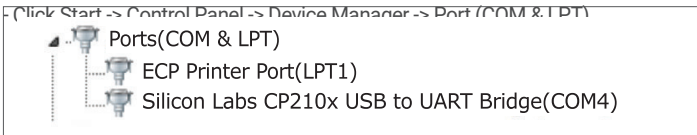
• Basic screen description



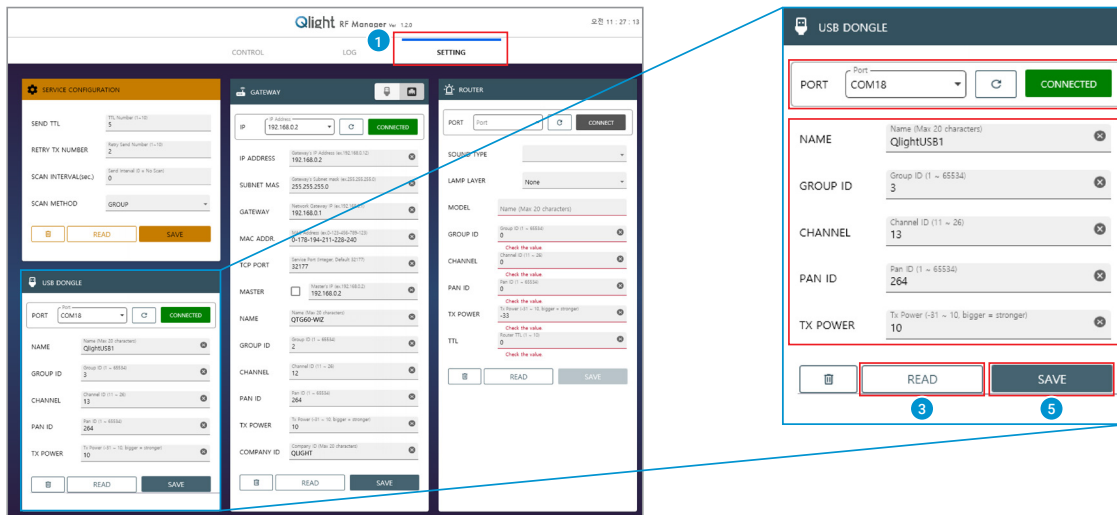
- 1 **Menu**
 - Connection: Control wireless devices through USB Dongle and Gateway
 - LOG: Save log data and use the data to check various information such as operation rate and productivity.
 - SETTING: USB Dongle, Gateway, wireless device settings
- 2 **Device Viewer:** Check and select the connection status of wireless devices
- 3 **Function to connect USB DONGLE and Gateway and scan wireless devices**
- 4 **Control selected devices through the device viewer window**

1) USB Dongle

- PC program allows you to configure wireless devices such as gateways, USB dongles and signaling devices, and can also monitor or control the status of the signaling devices.
- Check the COM port after the USB Dongle is connected(RS-232).



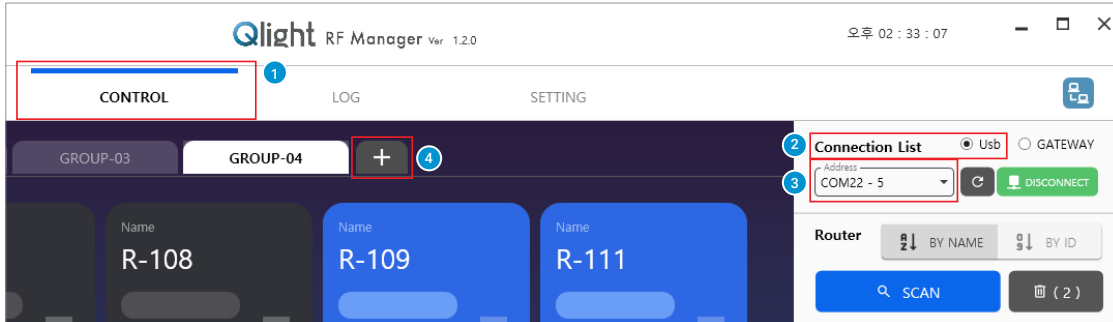
• USB DONGLE SETTING



- 1 Select the SETTING menu and set up the USB DONGLE.
- 2 Check and select the COM port of your PC and press CONNECT to connect to the USB DONGLE.
- 3 Press the READ button to load the RF information of the currently set USB DONGLE.
- 4 Check and modify the RF information of the USB DONGLE.
- 5 Click the SAVE button to save the modified information.

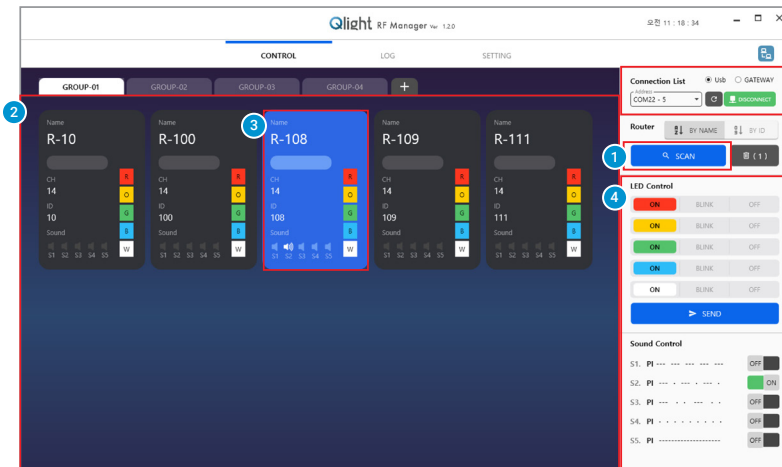
Wireless Network System Application

• USB DONGLE CONNECTION



- 1 Select the CONTROL menu.
- 2 Select USB from the CONNECTION LIST.
- 3 Check and select the COM port of your PC and press CONNECT to connect to the USB DONGLE.
- 4 When connecting multiple USB DONGLES, add GROUP.

• DEVICE MONITORING & CONTROL



- 1 After connecting to the USB DONGLE, press the SCAN button to connect the wireless device.
- 2 The wirelessly connected device will appear on the screen.
- 3 Select the device you need to control.
- 4 Control selected devices.

2) Gateway - Setting and Usage

- The PC program allows you to configure wireless devices such as gateways, USB dongles and signaling devices, and can also monitor or control the status of the signaling devices.
- Setting and Usage
- The PC program allows you to configure wireless devices such as gateways, USB dongles and signaling devices, and can also monitor or control the status of the signaling devices.
- With the Gateway linked to the Ethernet Network users can check or control the operation status of devices by smartphone. The control PC uses IIS function to enable access to the smartphone in WINDOW XP or later versions.

IIS?

What is IIS? IIS stands for Microsoft's Internet Information Services which is a WINDOWS service used for web service.

With IIS, services such as FTP, SMTP, NNTP, and HTTP/ HTTPS are available.

• GATEWAY SETTING

The image shows two screenshots from the Qlight RF Manager software. The left screenshot shows the 'SETTING' menu with the 'GATEWAY' tab selected. The right screenshot shows the 'GATEWAY' configuration screen with various fields and buttons. Numbered callouts 1 through 5 point to specific elements in both screenshots.

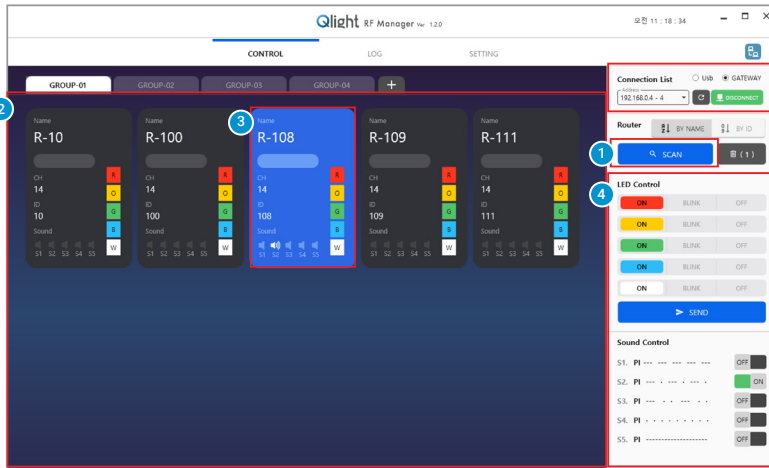
- 1 Select the SETTING menu and set the GATEWAY.
- 2 After setting the IP of the gateway to be connected, click CONNECT to connect to the gateway.
- 3 Press the READ button to load information on the currently set GATEWAY.
- 4 Check and modify GATEWAY's default information.
- 5 Click the SAVE button to save the modified information.

• GATEWAY CONNECTION

The image shows the 'CONTROL' menu in Qlight RF Manager. The 'GATEWAY' connection list is visible, showing a list of gateways and their IP addresses. Numbered callouts 1 through 4 point to specific elements in the interface.

- 1 Select the CONTROL menu.
- 2 Select GATEWAY from CONNECTION LIST.
- 3 Select the IP of the GATEWAY to connect and press CONNECT to connect to the GATEWAY.
- 4 When connecting multiple GATEWAYS, add GROUP.

• GATEWAY CONNECTION



- 1 After connecting to the GATEWAY, press the SCAN button to connect the wireless device.
- 2 The wirelessly connected device will appear on the screen.
- 3 Select the device you need to control.
- 4 Control selected devices.

How to use your smartphone

- To use a smartphone, you must link the Gateway with a wired/wireless router.
- Access the Qlight RF Manager page on your smartphone using the IP address of the administrator PC on which IIS is set.
- After logging in through the login page, select the connected gateway.
- Select a signal information device connected to the selected gateway to monitor or control the device.
- For detailed settings, please contact the manufacturer.

